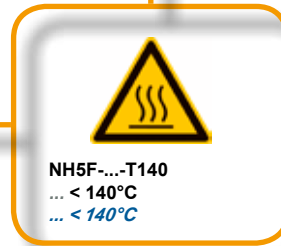
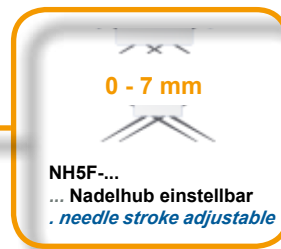
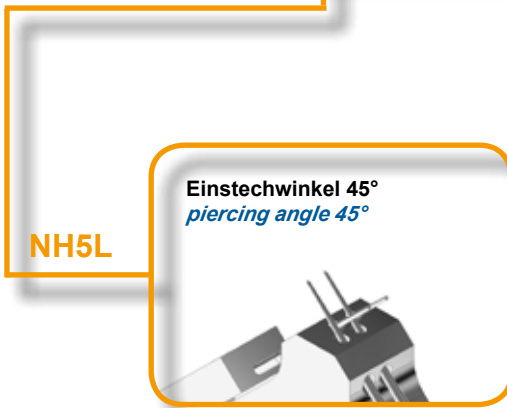
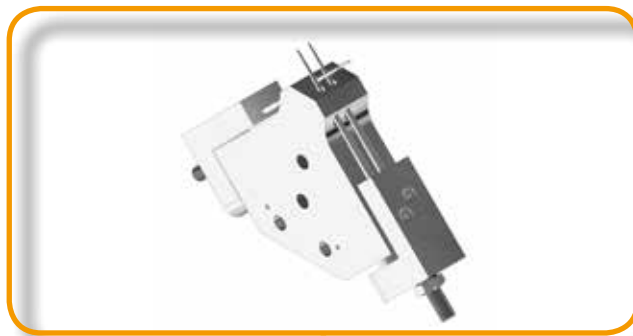


**Nadelgreifer mit KLEINER Greifflächen**  
*Needle gripper with SMALL gripping area*

**Greifwirkfläche 9x15 mm**  
*Gripping area 9x15 mm*  
Geeignet zum Stanzbutzen entfernen  
*Suitable for removing punched joints*

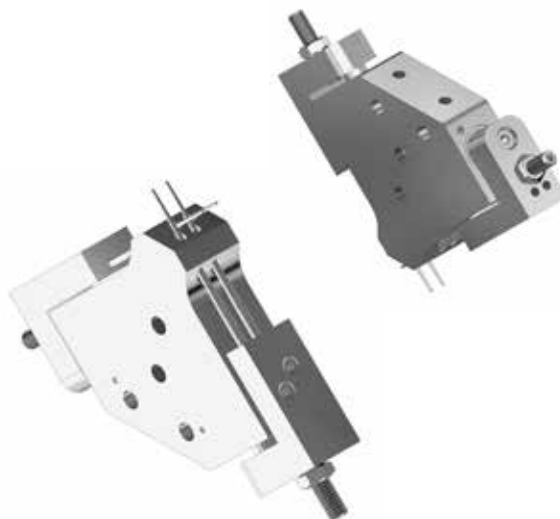


## Merkmale

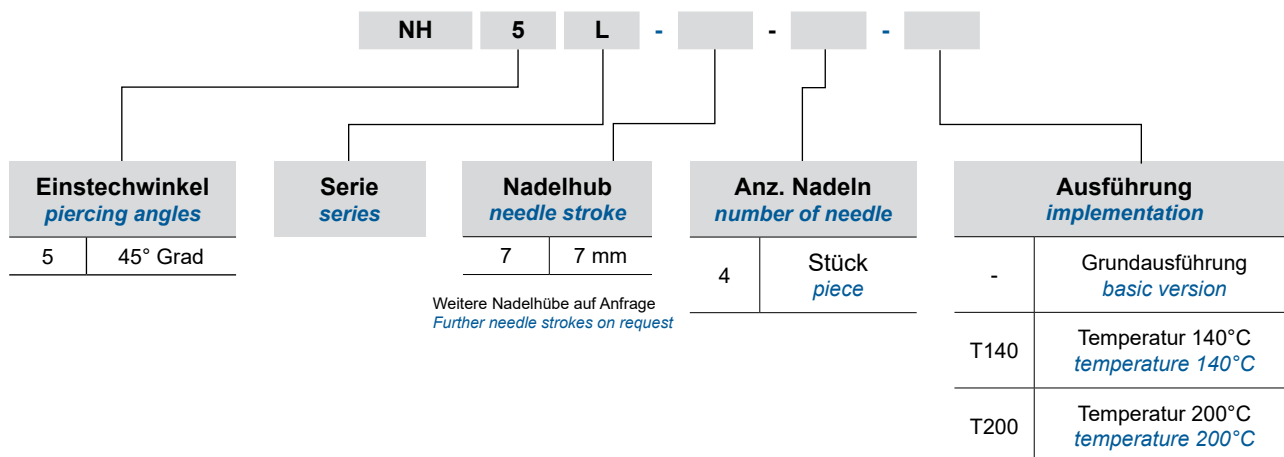
- kleine Greifwirkfläche
- steiler Einstechwinkel
- Hubeinstellung stufenlos
- doppelwirkende Zylinder
- zentrale Luftanschlüsse
- robuste Aluminiumausführung

## Features

- *small gripping area*
- *steep recess angle*
- *Stroke adjustment infinitely variable*
- *double-acting cylinders*
- *central air connections*
- *robust aluminium design*



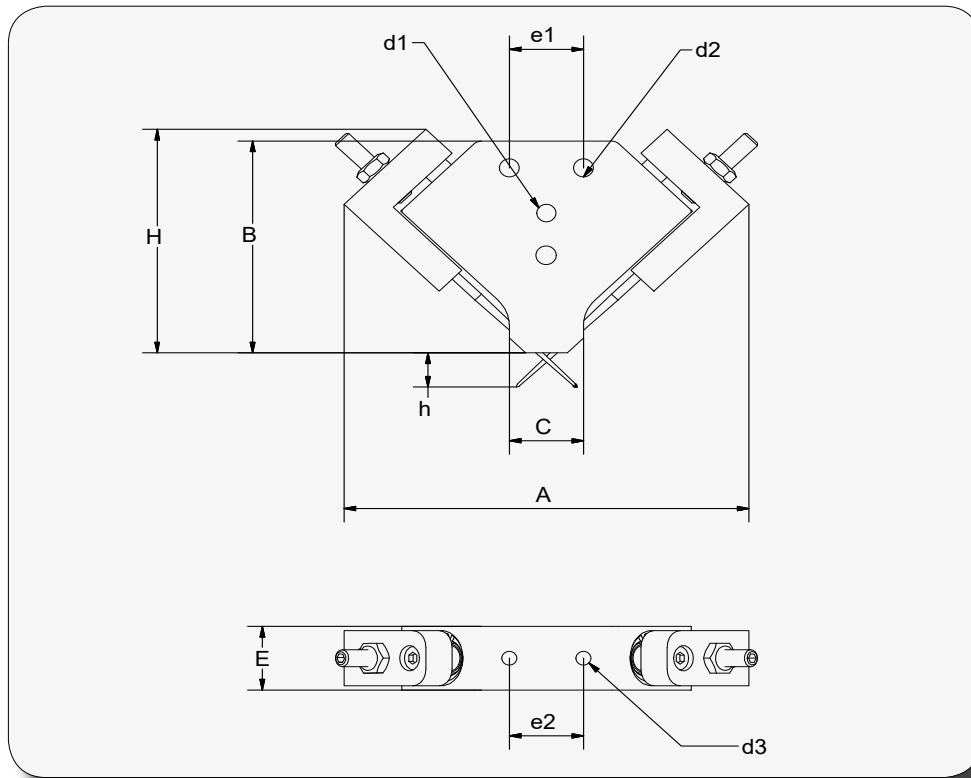
## Bestellschlüssel / order key



## Technische Daten / technical data

Serie / series	NH5L-7-4
Nadelhub einstellbar (mm) / <i>adjustable needle stroke (mm)</i>	0 - 7
Gewicht (g) / <i>weight (g)</i>	110
Nadelanzahl (Stk.) / <i>number of needles (pcs.)</i>	4
Nadeldurchmesser (mm) / <i>needle diameter (mm)</i>	2
Funktionsweise / <i>functionality</i>	doppelwirkend / <i>double-acting</i>
Betriebsdruck (bar) / <i>operating pressure min./max. (bar)</i>	2 / 8
Betriebstemperatur (°C) / <i>operating temperature min./max. (°C)</i>	0 / 70
Auflagefläche (mm) / <i>contact surface (mm)</i>	9 x 15

**Abmessungen / dimensions**



Artikel / article	A (min./max.)	B	C	H (min./max.)	E	h	e1	e2	d1	Ø d2	d3
NH5L-7	89 / 105	50	16	54 / 62	15	7	16	16	2xM5	4,2	2xM4

**Ersatznadeln / spare needles**

**Bestellschlüssel / order key**

**NHN - H 2 x 60**



**Serie NHL**